

Effective April 11, 2011
(Supersedes UW PDF0311)

The issuance of this price list is not an offer to sell the goods listed here at the prices stated.

STYLE NO. P100 COUPLING



H x H				
Size	Part #	Ctn	Plt	List
1 1/4	05932	100	7,200	5.91
1 1/2	05933	100	7,200	1.34
2	05934	100	4,800	1.74
3	05935	60	1,440	5.99
4	05936	25	700	10.62
6	06143	15	180	34.58
8	06145	4	80	76.18

STYLE NO. P101 FEMALE ADAPTER



FPT x H				
Size	Part #	Ctn	Plt	List
1 1/4	05868	50	4,500	12.65
1 1/2	05866	100	7,200	2.49
2	05867	100	4,800	4.23
3	05869	30	1,260	11.39
4	06396	10	720	14.61
6	06147	10	240	49.05

STYLE NO. P102 PIPE INCREASER / REDUCER



H x H				
Size	Part #	Ctn	Plt	List
1 1/2 x 2	05948	25	3,600	3.87
1 1/2 x 3	05949	25	1,800	11.78
2 x 3	05950	20	1,440	9.05
2 x 4	05951	10	720	17.94
3 x 4	05952	20	840	19.08
4 x 6	05981	5	270	77.16

STYLE NO. P103P TRAP ADAPTER, MALE, W / 1 PIECE POLY NUT



SP x SJ				
Size	Part #	Ctn	Plt	List
1 1/4	06309	50	7,200	5.40
1 1/2	06393	50	5,400	4.93
1 1/2 x 1 1/4	06379	75	5,400	5.28

STYLE NO. P103R TRAP ADAPTER, MALE, W / PLASTIC NUT & 1 1/2 x 1 1/4 WASHER



SP x SJ				
Size	Part #	Ctn	Plt	List
1 1/2 x 1 1/4	06389	50	5,400	5.09
	OR			
1 1/2	06389	50	5,400	5.09

STYLE NO. P103W TRAP ADAPTER, MALE, W / PLASTIC NUT AND WASHER



SP x SJ				
Size	Part #	Ctn	Plt	List
1 1/4	06308	50	7,200	6.65
1 1/2	06410	50	5,400	4.93
2	06390	25	3,600	17.55
1 1/2 x 1 1/4	06409	50	5,400	5.28

STYLE NO. P103X TRAP ADAPTER, MALE, W / CHROME NUT & WASHER



SP x SJ				
Size	Part #	Ctn	Plt	List
1 1/2	06392	50	5,400	6.92
1 1/2 x 1 1/4	06378	100	7,200	6.75

STYLE NO. P104P TRAP ADAPTER, FEMALE, W / 1 PIECE POLY NUT



H x SJ				
Size	Part #	Ctn	Plt	List
1 1/4	06381	50	7,200	4.93
1 1/2	06377	50	5,400	4.72
1 1/2 x 1 1/4	06395	50	5,400	4.93

STYLE NO. P104W TRAP ADAPTER, FEMALE, W / PLASTIC NUT AND WASHER



H x SJ				
Size	Part #	Ctn	Plt	List
1 1/4	06380	50	7,200	4.23
1 1/2	06383	50	5,400	4.72
2	06382	25	3,600	7.64
1 1/2 x 1 1/4	06384	50	5,400	4.93

STYLE NO. P104X TRAP ADAPTER, FEMALE, W / CHROME NUT & WASHER



H x SJ				
Size	Part #	Ctn	Plt	List
1 1/2	06376	50	5,400	6.92
2	06397	25	3,600	12.83
1 1/2 x 1 1/4	06394	50	5,400	6.75

STYLE NO. P105 FITTING CLEANOUT ADAPTER



SP x FPT				
Size	Part #	Ctn	Plt	List
1 1/4	05918	50	7,200	4.23
1 1/2	05922	50	7,200	3.15
2	05923	50	3,600	4.06
3	05924	25	1,350	11.45
4	05925	10	720	18.81
6	06148	10	240	54.78

STYLE NO. P105X FITTING CLEANOUT ADAPTER, W / CLEANOUT PLUG



SP x FPT				
Size	Part #	Ctn	Plt	List
1 1/4	06007	50	7,200	5.73
1 1/2	06001	50	5,400	5.51
2	06002	50	3,600	6.68
3	06003	25	1,200	16.14
4	06004	10	540	25.71
6	06005	10	180	77.82

STYLE NO. P106 CLEANOUT PLUG



MPT				
Size	Part #	Ctn	Plt	List
1 1/4	05937	100	14,400	2.92
1 1/2	05938	50	7,200	2.36
2	05939	50	7,200	2.62
3	05941	25	3,600	4.69
4	05942	30	2,160	6.92
6	06146	10	720	23.04

STYLE NO. P106P SLIP PLUG



SP				
Size	Part #	Ctn	Plt	List
1 1/2	06055	25	3,600	4.68
2	06056	50	7,200	7.00

STYLE NO. P107 FLUSH BUSHING



SP x H STYLE #3				
Size	Part #	Ctn	Plt	List
1 1/2 x 1 1/4	05904	100	14,400	5.22
2 x 1 1/4	05905	50	7,200	5.34
2 x 1 1/2	05906	50	7,200	2.29
3 x 1 1/2	05907	30	3,240	11.02
3 x 2	05908	30	3,240	5.75
4 x 2	05910	30	1,440	19.17
4 x 3	05909	30	1,620	9.79

STYLE NO. P107S FLANGE BUSHING, W / TUBE STOP



SP x H STYLE #1				
Size	Part #	Ctn	Plt	List
6 x 4	06144	10	360	50.88
8 x 6	06149	4	128	110.81

STYLE NO. P108 FLUSH BUSHING



SP x FPT STYLE #1				
Size	Part #	Ctn	Plt	List
2 x 1 1/2	05913	50	7,200	11.18

STYLE NO. P109 MALE ADAPTER



H x MPT				
Size	Part #	Ctn	Plt	List
1 1/4	05931	50	4,500	5.95
1 1/2	05927	50	7,200	2.59
2	05928	50	3,600	3.36
3	05929	25	1,800	9.64
4	05930	25	900	21.36

REDUCING				
Size	Part #	Ctn	Plt	List
1 1/4 x 1 1/2	05926	25	3,600	3.40

STYLE NO. P110 FLUSH CLEANOUT PLUG



MPT				
Size	Part #	Ctn	Plt	List
4	06015	25	3,600	10.10
2	06017	25	7,200	7.96
3	06018	50	7,200	9.24

STYLE NO. P111 MALE FITTING ADAPTER



SP x MPT				
Size	Part #	Ctn	Plt	List
1 1/4	06010	50	7,200	5.09
1 1/2	06386	50	5,400	9.85
2	06385	25	3,600	10.11
3	06366	25	1,350	17.14

REDUCING				
Size	Part #	Ctn	Plt	List
1 1/2 x 1 1/4	06387	100	7,200	3.24

STYLE NO. P113 TRAY PLUG ADAPTER



H x NPSM THREAD				
Size	Part #	Ctn	Plt	List
1 1/2	06014	50	3,600	7.06

STYLE NO. P113S TRAY PLUG ADAPTER, SPIGOT



SP x NPSM				
Size	Part #	Ctn	Plt	List
1 1/2	06419	50	2,700	8.29

STYLE NO. P114 THREADED CAP



FPT				
Size	Part #	Ctn	Plt	List
1 1/2	05993	100	9,000	5.42
2	05994	50	7,200	7.54

STYLE NO. P116 SOCKET CAP



H				
Size	Part #	Ctn	Plt	List
1 1/2	05977	50	7,200	5.32
2	05978	25	3,600	8.87
3	05979	25	1,800	15.35
4	05980	5	720	21.92
6	06057	5	360	55.36
8	06058	3	108	189.91

STYLE NO. P117 ADAPTER COUPLING



S/D H x DWV H (ADAPTS SEWER & DRAIN PIPE TO DWV PIPE)				
Size	Part #	Ctn	Plt	List
3	05970	10	720	20.26
4	05963	10	480	20.59
4 x 3	05962	20	960	15.66

PVC DWV FITTINGS

STYLE NO. P117X ADAPTER COUPLING, S/D X DWV HUB



S/D SP x DWV H (Adapts 4" S/D HUB TO 3" DWV Spigot PIPE)

Size	Part #	Ctn	Plt	List
4 x 3	05992	10	720	15.29

STYLE NO. P118 ADAPTER BUSHING



DWV SP x SD H (Adapts DWV Hub to S/D Spigot)

Size	Part #	Ctn	Plt	List
3	05990	25	2,700	15.97
4	05991	10	1,440	8.19

STYLE NO. P119 NO HUB ADAPTER



NO H x H (Adapts CI NO HUB TO DWV PIPE)

Size	Part #	Ctn	Plt	List
1 1/2	05802	25	3,600	15.55
2	05954	25	3,600	6.93
3	05955	20	1,440	10.08
4	05956	15	810	12.96
4 x 3	05953	10	480	21.56

STYLE NO. P120 SCH 40 TO SCH 30 ADAPTER



(ADAPTS 3" SCH 30. HUB TO 3" PVC SCH 40)

Size	Part #	Ctn	Plt	List
3	05996	20	1,440	7.00

STYLE NO. P122 SPIGOT ADAPTER, CAST IRON



ALL HUB (ADAPTS CI SPIGOT TO DWV PIPE)

Size	Part #	Ctn	Plt	List
2	05944	50	3,600	16.31
4	05946	10	320	26.89

STYLE NO. P123 HUB ADAPTER, CAST IRON



SP x H (ADAPTS CI HUB TO DWV PIPE)

Size	Part #	Ctn	Plt	List
2	05957	20	1,440	11.30
3	05958	20	840	20.22
4	05959	20	480	35.39

STYLE NO. P123R HUB ADAPTER, CAST IRON, INCREASER



SP x H (ADAPTS CI HUB TO DWV PIPE)

Size	Part #	Ctn	Plt	List
2 x 1 1/2	05961	10	1,440	18.17
3 x 1 1/2	05964	10	720	20.49
3 x 2	06398	20	1,080	17.39
4 x 3	05960	10	480	25.88

STYLE NO. P130 REPAIR COUPLING



H x H

Size	Part #	Ctn	Plt	List
1 1/2	05965	20	4,800	7.25
2	05966	25	3,600	5.07
3	05967	10	1,080	12.79
4	05968	5	540	24.63
6	05969	5	175	90.85

STYLE NO. P140 SLIP JOINT NUT



Size	Part #	Ctn	Plt	List
1 1/4	05743	400	21,600	1.97
1 1/2	05744	100	14,400	1.35
2	05741	100	10,800	2.24

STYLE NO. P142 1 PIECE POLY NUT



Size	Part #	Ctn	Plt	List
1 1/4	01036	150	21,600	2.48
1 1/2	01038	125	18,000	1.90

STYLE NO. P300 1/4 BEND



H x H

Size	Part #	Ctn	Plt	List
1 1/4	05875	50	3,000	9.79
1 1/2	05876	100	3,200	2.68
2	05877	50	1,800	4.23
3	05878	25	450	12.47
4	05879	10	240	24.58
6	06130	5	80	86.27
8	06131	2	32	157.26

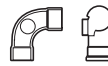
STYLE NO. P300R 1/4 BEND



H x H

Size	Part #	Ctn	Plt	List
2 x 1 1/2	06092	10	1,440	16.15

STYLE NO. P300S 1/4 BEND, W / SIDE INLET



H x H

Size	Part #	Ctn	Plt	List
3 x 3 x 1 1/2	06069	10	360	34.42
3 x 3 x 2	06070	10	360	25.44

STYLE NO. P302 1/4 BEND, STREET



SP x H

Size	Part #	Ctn	Plt	List
1 1/4	05894	50	3,000	13.48
1 1/2	05880	100	3,600	3.59
2	05881	50	1,800	5.46
3	05882	20	560	13.82
4	05883	10	240	25.99
6	05889	5	80	120.18

STYLE NO. P303 1/4 BEND, W / LOW HEEL INLET



H x H

Size	Part #	Ctn	Plt	List
3 x 3 x 1 1/2	06041	25	450	26.05
3 x 3 x 2	06042	25	450	22.45
4 x 4 x 2	06043	15	180	44.31

STYLE NO. P304 LONG SWEEP 1/4 BEND



H x H

Size	Part #	Ctn	Plt	List
1 1/2	05871	50	1,800	6.44
2	05872	25	1,200	6.97
3	05873	10	360	16.40
4	05874	5	180	31.33

STYLE NO. P305 LONG SWEEP 1/4 BEND W / HIGH HEEL INLET



H x H

Size	Part #	Ctn	Plt	List
3 x 3 x 1 1/2	06028	10	360	59.19
3 x 3 x 2	06027	25	400	96.84

STYLE NO. P307 LONG SWEEP 1/4 BEND W / LOW HEEL INLET



H x H

Size	Part #	Ctn	Plt	List
3 x 3 x 1 1/2	06025	10	360	21.19
3 x 3 x 2	06024	25	300	46.96

STYLE NO. P309 LONG SWEEP 1/4 BEND, STREET



SP x H

Size	Part #	Ctn	Plt	List
1 1/2	06060	50	2,400	9.28
2	06061	25	1,200	10.83
3	06063	20	360	29.78
4	06064	10	160	45.88

STYLE NO. P310 1/4 BEND W / LOW HEEL INLET



H x H x SP

Size	Part #	Ctn	Plt	List
3 x 3 x 2	06026	15	420	60.01

STYLE NO. P311 LONG SWEEP 1/4 BEND W / SIDE INLET



H x H

Size	Part #	Ctn	Plt	List
3 x 3 x 2	06050	25	400	67.49

STYLE NO. P319 1/6 BEND



H x H

Size	Part #	Ctn	Plt	List
1 1/2	05895	40	2,880	5.86
2	05896	25	1,800	7.52
3	05897	20	320	23.95
4	05982	10	320	37.06

STYLE NO. P320 1/6 BEND, STREET



SP x H

Size	Part #	Ctn	Plt	List
1 1/2	06020	50	3,000	11.02
2	06021	20	1,800	14.88
3	06022	20	640	32.06
4	06023	5	160	46.63

STYLE NO. P321 1/8 BEND



H x H

Size	Part #	Ctn	Plt	List
1 1/4	05884	50	3,600	6.39
1 1/2	05885	100	3,600	2.63
2	05886	50	1,800	3.79
3	05887	20	640	11.16
4	05888	10	280	19.58
6	06132	3	96	78.96
8	06134	3	48	141.25

STYLE NO. P323 1/8 BEND, STREET



SP x H

Size	Part #	Ctn	Plt	List
1 1/4	06016	50	3,600	8.75
1 1/2	05890	100	3,600	2.61
2	05891	50	1,800	4.02
3	05892	20	720	10.94
4	05893	10	320	18.70
6	06133	3	96	96.72
8	06136	3	48	153.31

STYLE NO. P324 1/16 BEND



H x H

Size	Part #	Ctn	Plt	List
1 1/2	05899	50	3,600	3.69
2	05900	25	2,700	4.59
3	05901	20	720	11.74
4	05983	15	420	17.94
6	05988	3	108	107.80

STYLE NO. P326 1/16 BEND, STREET



SP x H

Size	Part #	Ctn	Plt	List
1 1/2	05984	50	5,400	10.44
2	05985	25	2,700	11.19
3	05986	20	960	17.60
4	05987	10	360	25.66
6	06011	5	90	104.43

STYLE NO. P327 DOUBLE 1/4 BEND



H x H

Size	Part #	Ctn	Plt	List
1 1/2	06045	20	1,440	10.65
2	06046	25	900	14.04
3	06047	10	280	39.44
4	06048	5	100	54.42

**STYLE NO. P331
VENT ELL**



H x H				
Size	Part #	Ctn	Pit	List
1 1/2	06084	20	2,880	5.71
2	06085	30	1,620	7.50
3	06086	25	700	18.91

**STYLE NO. P333
VENT ELL, STREET**



H x SP				
Size	Part #	Ctn	Pit	List
1 1/2	06088	25	3,600	5.78
2	06089	20	1,440	8.97
3	06090	10	540	22.39

**STYLE NO. P400
SANITARY TEE**



ALL HUB				
Size	Part #	Ctn	Pit	List
1 1/4	05751	50	2,000	9.80
1 1/2	05752	100	1,800	4.87
2	05753	35	1,120	7.14
3	05754	30	360	18.78
4	05755	5	140	33.38
6	05756	5	60	139.25
8	05775	1	30	416.77

**STYLE NO. P401
SANITARY TEE, REDUCING**



ALL HUB				
Size	Part #	Ctn	Pit	List
1 1/2 x 1 1/2 x 1 1/4	05757	20	1,440	8.79
2 x 1 1/2 x 1 1/2	05761	25	1,350	6.28
2 x 1 1/2 x 2	05760	25	1,200	7.62
2 x 2 x 1 1/2	05758	50	1,200	6.31
3 x 3 x 1 1/2	05764	20	640	13.28
3 x 3 x 2	05763	10	480	14.04
4 x 4 x 1 1/2	05767	5	360	35.95
4 x 4 x 2	05765	10	280	29.84
4 x 4 x 3	05766	10	180	40.55
6 x 6 x 4	05768	5	60	134.67

**STYLE NO. P403
SANITARY TEE, STREET**



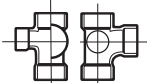
SP x H x H				
Size	Part #	Ctn	Pit	List
1 1/2	06112	20	2,160	14.25
2	06113	25	1,200	14.25
3	06114	30	360	23.76
4	06120	10	180	62.03

**STYLE NO. P404
SANITARY TEE, STREET,
REDUCING**



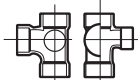
SP x H x H				
Size	Part #	Ctn	Pit	List
2 x 1 1/2 x 1 1/2	06115	25	1,350	11.92
2 x 1 1/2 x 2	06116	25	1,350	10.80
2 x 2 x 1 1/2	06117	50	1,600	12.43
3 x 3 x 1 1/2	06118	10	540	27.03
3 x 3 x 2	06119	20	560	23.47
4 x 4 x 2	06121	5	270	41.70

**STYLE NO. P416
SANITARY TEE
W / LEFT SIDE INLET**



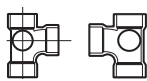
ALL HUB				
Size	Part #	Ctn	Pit	List
3 x 3 x 3 x 1 1/2	05781	10	280	43.74
3 x 3 x 3 x 2	05782	10	280	34.16
4 x 4 x 4 x 2	05784	5	120	75.33

**STYLE NO. P417
SANITARY TEE
W / RIGHT SIDE INLET**



ALL HUB				
Size	Part #	Ctn	Pit	List
3 x 3 x 3 x 1 1/2	05795	10	280	46.29
3 x 3 x 3 x 2	05796	10	280	34.16
4 x 4 x 4 x 2	05797	5	100	77.04

**STYLE NO. P418
SANITARY TEE W / RIGHT
& LEFT SIDE INLET**



ALL HUB				
Size	Part #	Ctn	Pit	List
3 x 3 x 3 x 1 1/2 x 1 1/2	05810	10	240	37.43
3 x 3 x 3 x 2 x 2	05811	5	210	49.18
4 x 4 x 4 x 1 1/2 x 1 1/2	05805	5	120	78.15
4 x 4 x 4 x 2 x 2	05808	5	100	89.19

**STYLE NO. P428
DOUBLE SANITARY TEE**



ALL HUB				
Size	Part #	Ctn	Pit	List
1 1/2	05812	25	1,350	10.81
2	05813	20	720	14.60
3	05814	20	240	40.79
4	05815	4	112	65.59

**STYLE NO. P429
DOUBLE SANITARY TEE,
REDUCING**



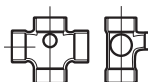
ALL HUB				
Size	Part #	Ctn	Pit	List
2 x 2 x 1 1/2 x 1 1/2	05817	20	840	11.02
3 x 3 x 1 1/2 x 1 1/2	05818	20	480	23.42
3 x 3 x 2 x 2	05820	10	360	24.63
4 x 4 x 2 x 2	05240	5	240	54.26
4 x 4 x 3 x 3	05821	5	160	55.67

**STYLE NO. P431
DOUBLE SANITARY TEE,
STREET, REDUCING**



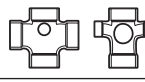
SP x H x H x H				
Size	Part #	Ctn	Pit	List
3 x 3 x 2 x 2	06310	10	360	53.75

**STYLE NO. P438
DOUBLE SANITARY TEE
W / SIDE INLET**



ALL HUB				
Size	Part #	Ctn	Pit	List
3 x 3 x 3 x 3 x 2	05772	10	180	50.43

**STYLE NO. P439
DOUBLE SANITARY TEE
W / RIGHT &
LEFT SIDE INLET**



ALL HUB				
Size	Part #	Ctn	Pit	List
3 x 3 x 3 x 3 x 2 x 2	05770	10	180	72.86

**STYLE NO. P441
VENT TEE**



ALL HUB				
Size	Part #	Ctn	Pit	List
1 1/2	06403	25	1,800	15.48
2	06404	25	1,350	13.11
3	06405	10	480	38.25
4	06406	5	180	50.65

**STYLE NO. P444X
CLEANOUT TEE WITH PLUG**



H x H x FPT				
Size	Part #	Ctn	Pit	List
1 1/2	05997	10	1,440	12.29
2	05998	10	1,080	14.18
3	05999	10	480	27.11
4	06000	5	180	47.15

**STYLE NO. P445
FLUSH CLEANOUT TEE**



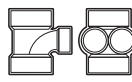
H x H x FPT				
Size	Part #	Ctn	Pit	List
1 1/2	06413	20	2,160	9.93
2	06414	20	1,440	11.56
3	06415	10	540	22.42
4	06416	10	240	40.22

**STYLE NO. P445X
FLUSH CLEANOUT TEE
W/ PLUG**



H x H x FPT				
Size	Part #	Ctn	Pit	List
2	05198	10	1,440	19.51
3	05199	10	360	31.66
4	05200	5	180	50.32

**STYLE NO. P447
HORIZONTAL TWIN TEE**



ALL HUB				
Size	Part #	Ctn	Pit	List
3 x 3 x 1 1/2 x 1 1/2	05235	5	400	69.79

**STYLE NO. P448
TWO-WAY CLEANOUT**



ALL HUB				
Size	Part #	Ctn	Pit	List
3	05237	10	240	43.70
4	05238	5	120	56.57

**STYLE NO. P500
DOUBLE FIXTURE FITTING**



ALL HUB				
Size	Part #	Ctn	Pit	List
2	05246	25	500	24.82
3	05249	5	135	53.61
REDUCING				
2 x 1 1/2 x 1 1/2 x 1 1/2	05247	20	840	29.70
2 x 2 x 1 1/2 x 1 1/2	05244	20	720	28.55
3 x 2 x 3 x 3	05250	5	135	53.07

**STYLE NO. P501
COMBINATION WYE &
1/8 BEND - ONE PIECE**



ALL HUB				
Size	Part #	Ctn	Pit	List
1 1/2	05853	50	1,200	11.74
2	05858	20	560	12.56
3	05852	10	240	31.25
4	05860	10	120	61.94

**STYLE NO. P502
COMBINATION WYE & 1/8 BEND,
REDUCING - ONE PIECE**



ALL HUB				
Size	Part #	Ctn	Pit	List
2 x 1 1/2 x 1 1/2	05835	5	540	20.58
2 x 1 1/2 x 2	05836	5	540	16.39
2 x 2 x 1 1/2	05865	20	840	16.51
3 x 3 x 1 1/2	05837	15	480	28.61
3 x 3 x 2	05857	10	360	20.66
4 x 4 x 2	05863	5	180	33.61
4 x 4 x 3	05864	5	140	41.98

**STYLE NO. P503
COMBINATION WYE &
1/8 BEND - TWO PIECE**



ALL HUB				
Size	Part #	Ctn	Pit	List
6	05266	2	24	247.75

**STYLE NO. P504
COMBINATION WYE & 1/8 BEND,
REDUCING - TWO PIECE**



ALL HUB				
Size	Part #	Ctn	Pit	List
6 x 6 x 4	05267	4	48	230.39
6 x 6 x 3	05271	5	40	249.27

**STYLE NO. P507
DOUBLE COMBINATION WYE
& 1/8 BEND, ASSEMBLED**



ALL HUB				
Size	Part #	Ctn	Pit	List
3	06032	10	120	91.94
4	06033	4	48	168.53
2 x 1 1/2	06034	10	490	47.57
3 x 2	06035	10	180	77.95
4 x 2	06036	5	90	148.60
4 x 3	06037	5	40	134.49

**STYLE NO. P515
COMBO WYE & 1/8 BEND
W / LEFT SIDE INLET**



ALL HUB				
Size	Part #	Ctn	Pit	List
3 x 3 x 3 x 2	06009	10	180	82.76

**STYLE NO. P516
COMBO WYE & 1/8 BEND
W / RIGHT SIDE INLET**



PVC DWV FITTINGS

STYLE NO. P601 WYE, REDUCING

ALL HUB



Size	Part #	Ctn	Pit	List
2 x 1 1/2 x 1 1/2	05831	25	1,050	12.29
2 x 1 1/2 x 2	05832	50	900	18.30
2 x 2 x 1 1/2	05826	25	1,050	10.70
3 x 3 x 1 1/2	05827	15	420	15.39
3 x 3 x 2	05828	25	400	17.39
4 x 4 x 1 1/2	05833	5	210	50.02
4 x 4 x 2	05829	10	240	25.67
4 x 4 x 3	05830	10	160	34.61
6 x 6 x 3	06138	5	60	125.11
6 x 6 x 4	06137	5	60	94.62
8 x 8 x 6	05834	1	16	226.47

STYLE NO. P602 WYE, STREET



SP x H x H

Size	Part #	Ctn	Pit	List
1 1/2	06367	50	1,800	14.53
2	06368	30	960	15.25
3	06369	10	360	32.43
4	06370	5	140	64.29

STYLE NO. P603 WYE, STREET, REDUCING



SP x H x H

Size	Part #	Ctn	Pit	List
3 x 3 x 1 1/2	06372	20	480	35.04
3 x 3 x 2	06373	30	480	27.17
4 x 4 x 2	06374	10	240	70.89
4 x 4 x 3	06375	10	180	70.34

STYLE NO. P611 DOUBLE WYE



ALL HUB

Size	Part #	Ctn	Pit	List
1 1/2	05838	40	1,120	19.85
2	05839	20	560	22.29
3	05840	10	160	46.63
4	05841	5	80	94.59
6	05842	2	24	185.91

STYLE NO. P611S DOUBLE WYE W / SIDE INLET



ALL HUB

Size	Part #	Ctn	Pit	List
3 x 3 x 3 x 3 x 2	05849	10	160	227.87
4 x 4 x 4 x 4 x 2	06159	5	60	372.03

STYLE NO. P612 DOUBLE WYE, REDUCING



ALL HUB

Size	Part #	Ctn	Pit	List
2 x 2 x 1 1/2 x 1 1/2	05847	10	720	20.25
3 x 3 x 1 1/2 x 1 1/2	05843	10	360	35.91
3 x 3 x 2 x 2	05844	10	280	34.74
4 x 4 x 2 x 2	05845	5	180	56.71
4 x 4 x 3 x 3	05846	5	90	74.90
6 x 6 x 4 x 4	06142	3	54	244.30

STYLE NO. P625 WYE W / LEFT SIDE INLET



ALL HUB

Size	Part #	Ctn	Pit	List
3 x 3 x 3 x 2	06155	5	175	89.38
4 x 4 x 4 x 2	06157	5	90	131.15

STYLE NO. P626 WYE W / RIGHT SIDE INLET



ALL HUB

Size	Part #	Ctn	Pit	List
3 x 3 x 3 x 2	06156	5	175	89.38
4 x 4 x 4 x 2	06158	5	90	131.15

STYLE NO. P700 RETURN BEND



H x H

Size	Part #	Ctn	Pit	List
1 1/2	06466	20	1,440	8.29
2	06467	35	840	14.25
3	06468	10	280	43.18
4	06469	5	120	78.43

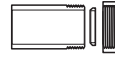
STYLE NO. P701 RETURN BEND W / CLEANOUT



H x H

Size	Part #	Ctn	Pit	List
1 1/2	06471	20	1,440	10.62
2	06472	10	720	13.50

STYLE NO. P704P TAIL PIECE ADAPTER (Plastic Nut)



SP x SJ (FINISHED W/BOTH SIZES SJ WASHERS)

Size	Part #	Ctn	Pit	List
1 1/2 x 1 1/4	05975	25	2,700	5.09
OR				
1 1/2	05975	25	2,700	5.09

STYLE NO. P706X P-TRAP W / SOLVENT WELD JOINT



H x H

Size	Part #	Ctn	Pit	List
1 1/2	05214	25	1,200	9.32
2	05222	20	560	12.57
3	05230	10	180	42.61
4	05231	4	96	97.16

STYLE NO. P707X P-TRAP W / SOLVENT WELD JOINT & CLEAN OUT



H x H

Size	Part #	Ctn	Pit	List
1 1/2	05223	10	1,080	15.39
2	05224	10	540	26.09

STYLE NO. P708P P-TRAP W / UNION



H x H

Size	Part #	Ctn	Pit	List
1 1/4	05921	50	1,350	55.88
1 1/2	05215	25	900	11.92
2	05216	20	480	25.88

STYLE NO. P710 P-TRAP LOW PROFILE



H x H

Size	Part #	Ctn	Pit	List
2	05225	20	720	8.29

STYLE NO. P711P LA P-TRAP W / UNION & 1 1/2 x 1 1/4 NUT & POLY WASHER



SJ x H (FURNISHED W/BOTH SIZE SJ WASHERS)

Size	Part #	Ctn	Pit	List
1 1/4 x 1 1/2	05220	25	900	20.32
OR				
1 1/2	05220	25	900	20.32

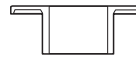
STYLE NO. P720X DRUM TRAP, W / CLEANOUT



H x H (W/PLUG)

Size	Part #	Ctn	Pit	List
3 x 6 x 1 1/2	06100	10	320	37.73

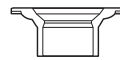
STYLE NO. P800 CLOSET FLANGE



H (ONE PIECE WITH SLOTS)

Size	Part #	Ctn	Pit	List
4 x 4	05902	25	700	13.53

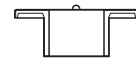
STYLE NO. P800S CLOSET FLANGE, W / STOP



(ONE PIECE WITH SLOTS)

Size	Part #	Ctn	Pit	List
4 x 3	05903	25	700	10.94

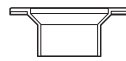
STYLE NO. P800KO CLOSET FLANGE, KNOCK OUT



H (ONE PIECE WITH SLOTS & KNOCK OUT TEST CAP)

Size	Part #	Ctn	Pit	List
4 x 3	05254	25	700	12.74
4 x 4	05253	25	700	18.97

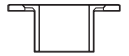
STYLE NO. P801 CLOSET FLANGE, SPIGOT, REDUCING



SP (ONE PIECE PLASTIC)

Size	Part #	Ctn	Pit	List
4 x 3	05919	25	800	13.20

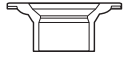
STYLE NO. P810 CLOSET FLANGE, ADJUSTABLE, W / PLASTIC RING



H (W / SLOTS)

Size	Part #	Ctn	Pit	List
4 x 4	05256	25	700	23.86

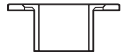
STYLE NO. P810S CLOSET FLANGE, W / STOP, ADJUSTABLE, W / PLASTIC RING



H (W / SLOTS)

Size	Part #	Ctn	Pit	List
4 x 3	05251	25	700	20.19

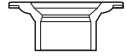
STYLE NO. P811 CLOSET FLANGE, ADJUSTABLE, W / METAL RING, EPOXY COATED



H (W / SLOTS)

Size	Part #	Ctn	Pit	List
4 x 3	05227	25	700	29.16
4 x 4	05226	25	700	32.98

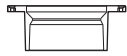
STYLE NO. P812 CLOSET FLANGE, SPIGOT, ADJUSTABLE, W / METAL RING, EPOXY COATED



SP

Size	Part #	Ctn	Pit	List
4 x 3	05228	25	700	28.67
4 x 4	05229	25	700	33.05

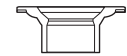
STYLE NO. P812P CLOSET FLANGE, SPIGOT, ADJUSTABLE, W / PLASTIC RING



SP

Size	Part #	Ctn	Pit	List
4 x 3	05252	25	700	35.77
4 x 4	05264	25	700	43.62

STYLE NO. P815 FLUSH CLOSET FLANGE



H (FITS OVER 3" OR INSIDE 4" SCH 40 DWV PIPE)

Size	Part #	Ctn	Pit	List
4 x 4 / 4 x 3	05255	25	700	21.05

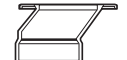
STYLE NO. P815KO FLUSH CLOSET FLANGE, KNOCK OUT



H (FITS OVER 3" OR INSIDE 4" SCH 40 DWV PIPE)

Size	Part #	Ctn	Pit	List
4 x 4 / 4 x 3	05257	25	700	20.37

STYLE NO. P820 OFFSET CLOSET FLANGE, ADJUSTABLE, W / METAL RING, EPOXY COATED



H

Size	Part #	Ctn	Pit	List
4 x 3	05920	15	540	37.84