

## ▶ ABS DWV PIPE

Streamline<sup>®</sup> employs proprietary manufacturing technologies and processes to produce our Streamline ABS DWV pipe with consistent and dense cellular structure, plus a uniform pipe wall thickness for uncompromising, reliable performance – and an attractive appearance. Smooth, consistent interior walls provide for full flow and increased resistance to corrosion and scaling. Dense and uniform cellular (foam) structure results in a stronger, more reliable and quiet product, and uniform interior and exterior wall skins improve joint strength and reliability. Finally, our relentless attention to quality and detail means our customers will enjoy the best pipe in the industry.



- Smooth and consistent interior wall provides for full flow, resistance to corrosion or scaling
- Smooth and consistent exterior wall provides for easy and reliable joining, joint performance, and attractive appearance
- Dense and uniform cellular (foam) structure provides, reliable, strong, and quiet product
- Uniform interior and exterior wall skin for a strong and reliable joint
- 25 year warranty

## Manufacturing

- Modern, state of the art manufacturing processes provide for highest quality product
- Responsive and high capacity facility to meet customer needs

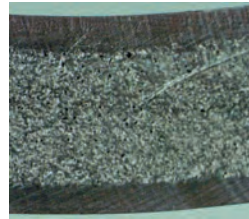
- Only West Coast manufacturer of both ABS DWV Pipe and Fittings
- Local manufacturing provides responsive distribution and service
- Local and responsive factory representatives and other support staff

## Codes & Standards

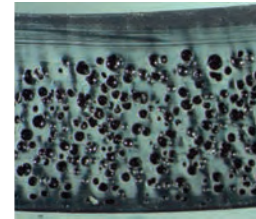
- ASTM Standard F628
- National Plumbing Code
- Uniform Plumbing Code
- International Plumbing Code
- One and Two Family Dwelling Code
- National Standard Plumbing Code
- Standard Plumbing Code

## Comparison

Cross-section zoom of Streamline manufactured cellular core pipe as compared to a leading competitor



Streamline



Other



### ABS DWV PIPE - 20 FT

ABS DWV Schedule 40 Cellular Core, Plain End, Black, ASTM F-628

Nom. Size	Length A	Avg. OD (inches)	Min. Wall Thickness	Feet Per Lift	Pieces Per Lift	Weight (lbs) Per 100 ft	Truckload % Per Lift
1-1/2"	20 ft.	1.900	0.145	5,180	259	27.3	5
2"	20 ft.	2.375	0.154	3,340	167	37.8	5
3"	20 ft.	3.500	0.216	1,500	75	74.5	5
4"	20 ft.	4.500	0.237	960	48	103.9	5
6"	20 ft.	6.625	0.280	360	18	186.9	5

### ABS DWV PIPE - 10 FT

ABS DWV Schedule 40 Cellular Core, Plain End, Black, ASTM F-628

Nom. Size	Length A	Avg. OD (inches)	Min. Wall Thickness	Feet Per Lift	Pieces Per Lift	Weight (lbs) Per 100 ft	Truckload % Per Lift
1-1/2"	10 ft.	1.900	0.145	2,590	259	27.3	2.5
2"	10 ft.	2.375	0.154	1,760	167	37.8	2.5
3"	10 ft.	3.500	0.216	750	75	74.5	2.5
4"	10 ft.	4.500	0.237	480	48	103.9	2.5
6"	10 ft.	6.625	0.280	180	18	186.9	2.5